

Technical Data Sheet

LANKO 603



Description

POLYURETHANE

LANKO 603 POLYURETHANE is a single-component polyurethane sealant. Easy application on most materials: concrete, stone, brick, roof-tiles, ceramic tiles, PVC, aluminum, wood, glass.

Suitable for joints subject to movement

Resilient to weathering and rust-inducing conditions

Paintable (emulsion paint)

Uses

- Heavy and light prefabricated constructions, traditional masonry
- Expansion joints in concrete structures
- Bridging joints between prefabricated elements
- Sealing joints in facades, boards, siding metal constructions
- Sealing joints and weatherstripping in woodwork and aluminum
- Sealing roof-tiles and ceramic tiles

Product Use Technical Data

- | | |
|--------------------------------|---------------|
| - Tack free | : 2 hours |
| - Temperature resistance | : 0°C to 80°C |
| - Elongation at break | : 700% |
| - Hardness shore A | : 25 approx. |
| - Modulus of elasticity at 100 | : 0.30 MPa |
| - Flowability | : None |

Resistance*	
UV & Ozone	: Good
Water	: Good
Solvents	: Moderate
Hydrocarbons	: Moderate
Acid & Base	: Moderate

Coverage: One sausage fills 6 m long of 1 cm x 1 cm gap

Packaging: 600 ml sausage and 310 ml cartridge

*Average laboratory values provided as a general guide

SINGLE COMPONENT POLYURETHANE SEALANT



SEALANTS & ADDITIVES

pg1

DISCLAIMER

The use of these products is beyond the manufacturer's control and liability is restricted to the replacement of material proven faulty. The manufacturer is not responsible for any loss or damage arising from incorrect usage. Specifications are subject to change without prior notice.

Technical Data Sheet

LANKO 603



How to use

POLYURETHANE

Joint design:

-Joint size may range from a minimum of 5 mm to a maximum of 50 mm width.

-Structural joints must have a minimum of 10 mm x 10 mm application.

- Joints that are expected to experience cyclical movement should have a width to depth ratio of 2:1.

Curing:

-Applied product is tacky after 2 hours.

-For 10mm x 10mm applications, product applied cures in 24 hours.

Precautions:

-For structural joints, application is at minimum of 10mm x 10mm.

- Working temperature range for use: 10°C - 35°C.

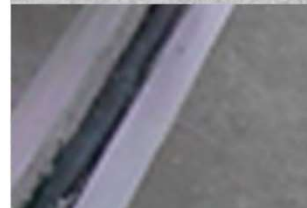
- In all cases, joints, shearing, compression and displacement should be studied in advance.

- In view of the wide range of materials available, especially porous materials, a representative test should be carried out prior to application in order to ascertain the need for primer.

- Do not allow contact with black rubber, bitumen, asphalt and solvent paints.

Storage: Store in a cool dry place, up to 6 months from the date of manufacture, in its original and unopened container.

SINGLE COMPONENT POLYURETHANE SEALANT



pg2

SEALANTS & ADDITIVES

PAREXGROUP INC.

No. 888 Cayetano Avenue, Warehouse 5 & 6, C5 Extension,
Diversion Road, Brgy. Palingon-Tipas, Taguig City, 1637 - Philippines
Tel. (02) 672-1705 / (02) 790-9800 Fax: (02) 790-9828
www.parexgroup.com.ph